

# SOLENOID VALVE

Electroválvulas  
Magnetventile  
Électrovalve

## DS5/NG10 solenoid (alternative current)



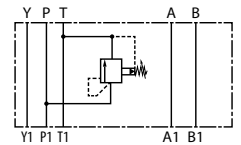
Bobinas corriente alterna para DS5/NG10  
Wechselstrom-Magnetspulen für DS5/11N  
Bobines courant alternatif pour DS5/NG10

Part n° Referencia	VOLTAGE (V) VOLTAJE (V)	POWER (W) POTENCIA (W)	€
C25.4-A24-50K1/11	24 VAC	95	82,81
C25.4-A110-50K1/10	110 VAC	95	82,81
C25.4-A230-50K1/10	230 VAC	105	82,81
C25.4-A48-50K1/10	48 VAC	110	96,06

## NG10 relief valve in P discharge in T



Limitadora simple en P - descarga en T  
Entlastungsventil in P - Entlastung in T  
Valve NG10 limiteur de pression sur P décharge sur T

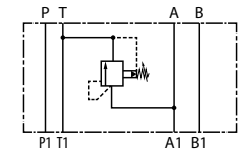


Part n° Referencia	SIZE TAMAÑO	MAX. FLOW (l/min) CAUDAL MÁX. (l/min)	MAX. PRESSURE (bar) PRESIÓN MÁX. (bar)	REG. RATE (bar) CAMPO REG. (bar)	€
RQ4M3-SP/51	NG-10	120	350	0 - 70	346,89

## NG10 relief valve in A discharge in T



Limitadora simple en A - descarga en T  
Entlastungsventil in A - Entlastung in T  
Valve NG10 limiteur de pression sur A décharge sur T

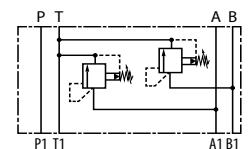


Part n° Referencia	SIZE TAMAÑO	MAX. FLOW (l/min) CAUDAL MÁX. (l/min)	MAX. PRESSURE (bar) PRESIÓN MÁX. (bar)	REG. RATE (bar) CAMPO REG. (bar)	€
RQ4M3-SAT/51	NG-10	120	350	0 - 70	346,89
RQ4M4-SAT/51	NG-10	120	350	0 - 140	346,89

## NG10 double relief valve in A & B discharge in T



Limitadora doble en A y B - descarga en T  
Doppeltwirk. Entlastungsventil in A und B - Entlastung in T  
Valve NG10 limiteur de pression double A et B décharge sur T



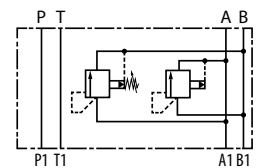
Part n° Referencia	SIZE TAMAÑO	MAX. FLOW (l/min) CAUDAL MÁX. (l/min)	MAX. PRESSURE (bar) PRESIÓN MÁX. (bar)	REG. RATE (bar) CAMPO REG. (bar)	€
RQ4M3-DT/51	NG-10	120	350	0 - 70	469,68

Until end of stock / Hasta fin de existencias / Bis zum Ende des Lagerbestandes / Jusqu' à la fin du stock

## NG10 double relief valve in A & B crossed discharge



Limit. doble en A y B - descarga cruzada  
Doppeltwirk. Entlastungsventil in A und B - Gekreuzte Entlastung  
Valve NG10 limiteur de pression double A et B décharge croisée



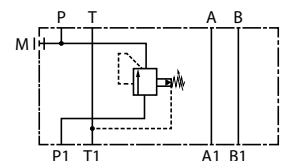
Part n° Referencia	SIZE TAMAÑO	MAX. FLOW (l/min) CAUDAL MÁX. (l/min)	MAX. PRESSURE (bar) PRESIÓN MÁX. (bar)	REG. RATE (bar) CAMPO REG. (bar)	€
RQ4M3-D/51	NG-10	120	350	0 - 70	500,38

Until end of stock / Hasta fin de existencias / Bis zum Ende des Lagerbestandes / Jusqu' à la fin du stock

## NG10 Pilot operated pressure reducing valve



Válvula reductora de presión pilotada NG10  
Druckminderventil pilotgesteuert NG10  
Réducteur de pression piloté NG10



Part n° Referencia	SIZE TAMAÑO	MAX. FLOW (l/min) CAUDAL MÁX. (l/min)	MAX. PRESSURE (bar) PRESIÓN MÁX. (bar)	REG. RATE (bar) CAMPO REG. (bar)	€
Z4M3-I/50	NG-10	80	320	5 - 70	703,38
Z4M4-I/50	NG-10	80	320	8 - 140	703,38
Z4M5-I/50	NG-10	80	320	10 - 210	703,38
Z4M6-I/50	NG-10	80	320	15 - 320	703,38

# SOLENOID VALVE

Electroválvulas  
Magnetventile  
Électrovalve

PUMPS

CONTROL COMPONENTS

MOTION DEVICE

ACCESSORIES

MINI POWER PACKS

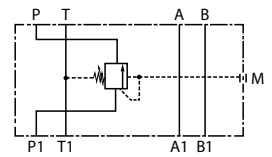
## NG10 sequence valve in P



Válvula de secuencia

Zuschaltventil

Valve NG10 de séquence sur P



Part n° Referencia	SIZE TAMAÑO	MAX. FLOW (l/min) CAUDAL MÁX. (l/min)	MAX. PRESSURE (bar) PRESIÓN MÁX. (bar)	REG. RATE (bar) CAMPO REG. (bar)	€
SD4M3/50	NG-10	80	320	0 - 70	939,95
SD4M4/50	NG-10	80	320	0 - 140	939,95
SD4M5/50	NG-10	80	320	0 - 210	939,95

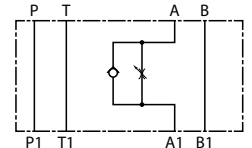
## NG-10 Unidirectional flow restrictor valve in A line



Válvula reguladora de caudal simple unidireccional NG10- A

Einfaches Flussmengen-Regelventil NG10 in Linie - eine Richtung - Ausgang A

Étrangleur de débit simple unidirectionnel sur ligne A, NG-10



Part n° Referencia	SIZE TAMAÑO	MAX. FLOW (l/min) CAUDAL MÁX. (l/min)	MAX. PRESSURE (bar) PRESIÓN MÁX. (bar)	DIRECTION SENTIDO	OIL PORTS A-B TOMAS A-B	€
QTM5-SA/10/S	NG-10	80	320	Salida / Output	A	425,53

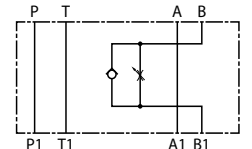
## NG-10 Unidirectional flow restrictor valve in B line



Válvula reguladora de caudal simple unidireccional NG10 -B

Einfaches Flussmengen-Regelventil NG10 in Linie - eine Richtung - Ausgang B

Étrangleur de débit simple unidirectionnel sur ligne B, NG-10



Part n° Referencia	SIZE TAMAÑO	MAX. FLOW (l/min) CAUDAL MÁX. (l/min)	MAX. PRESSURE (bar) PRESIÓN MÁX. (bar)	DIRECTION SENTIDO	OIL PORTS A-B TOMAS A-B	€
QTM5-SB/10/S	NG-10	80	320	Salida / Output	B	425,53

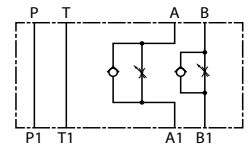
## NG-10 Unidirectional flow restrictor valve in A & B lines - retour



Válvula reguladora de caudal doble unidireccional NG10 -salida

Doppeltes Flussmengen-Regelventil NG10 in Linie - eine Richtung - Eingang

Étrangleur de débit unidirectionnel sur lignes A et B, NG-10 descente



Part n° Referencia	SIZE TAMAÑO	MAX. FLOW (l/min) CAUDAL MÁX. (l/min)	MAX. PRESSURE (bar) PRESIÓN MÁX. (bar)	DIRECTION SENTIDO	OIL PORTS A-B TOMAS A-B	€
QTM5-D/10/S	NG-10	80	320	Salida / Output	A - B	491,59

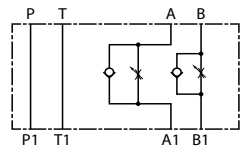
## NG-10 Unidirectional flow restrictor valve in A & B lines (upwards)



Válvula reguladora de caudal doble unidireccional NG10 -entrada

Doppeltes Flussmengen-Regelventil NG10 in Linie - eine Richtung - Ausgang

Étrangleur de débit unidirectionnel sur lignes A et B, NG-10 (montée)



Part n° Referencia	SIZE TAMAÑO	MAX. FLOW (l/min) CAUDAL MÁX. (l/min)	MAX. PRESSURE (bar) PRESIÓN MÁX. (bar)	DIRECTION SENTIDO	OIL PORTS A-B TOMAS A-B	€
QTM5-RD/10/S	NG-10	80	320	Entrada / Input	A - B	516,85

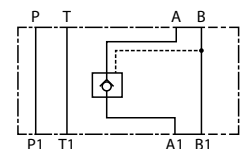
## NG10 Pilot operated single check valve -A



Válvula antirretorno simple pilotada NG10 -A

Rückschlagventil NG10-A einfach pilotgesteuert

Clapet anti-retour simple piloté NG10 -A



Part n° Referencia	SIZE TAMAÑO	MAX. PRESSURE (bar) PRESIÓN MÁX. (bar)	FLOW (l/min) CAUDAL (l/min)	OIL PORTS A-B TOMAS A-B	€
CHM5-SA/10	NG-10	320	100	A	441,07

# SOLENOID VALVE

Electroválvulas  
Magnetventile  
Électrovalve

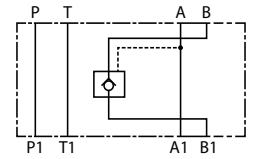
PUMPS

CONTROL COMPONENTS



## NG10 Pilot operated single check valve-B

Válvula antirretorno simple pilotada NG10 -B  
Rückschlagventil NG10-B doppelt pilotgesteuert  
Clapet anti-retour simple piloté NG10 -B



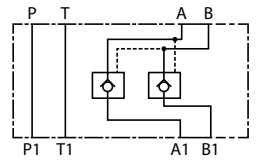
Part n° Referencia	SIZE TAMANO	MAX. PRESSURE (bar) PRESION MAX.(bar)	FLOW (l/min) CAUDAL (l/min)	OIL PORTS A-B TOMAS A-B	€
CHM5-SB/10	NG-10	320	100	B	441,07

MOTION DEVICE



## NG10 Pilot operated double check valve

Válvula antirretorno doble pilotada NG10  
Rückschlagventil NG10 doppelt pilotgesteuert  
Clapet anti-retour double piloté NG10



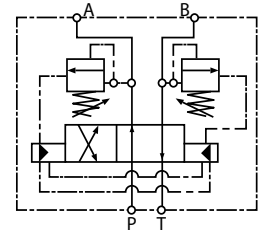
Part n° Referencia	SIZE TAMANO	MAX. PRESSURE (bar) PRESION MAX.(bar)	OIL PORTS A-B TOMAS A-B	€
CHM5-D/10	NG-10	320	A - B	504,09

ACCESSORIES



## NG10 Self-reversing valve

Válvula inversora NG10  
NG10 Automatisches Umkehrventil  
Valve à inversion automatique NG10



Part n° Referencia	MÍN. PRESS. (bar) PRESION MÍN. (bar)	MIN. FLOW (l/min) CAUDAL MÍN. (l/min)	MAX. PRESSURE (bar) PRESION MAX. (bar)	€
DSB5-RTA/10N	60	10	320	415,08

MINI POWER PACKS



## NG10 reversing valve by pressure

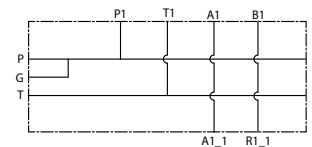
Válvula inversora por presión NG10  
Druckumkehrventil NG10  
Valve NG10 d'inversion par pression

NEW

Part n° Referencia	Min. Press. (bar) Presión MÍN (bar)	Max. Press. (bar) Pres. max. (bar)	Min. flow (l/min) Caudal mín. (l/min)	FLOW MAX (l/min) CAUDAL MAX (l/min)	€
VSIA L10 VM 10	20	100	3	80	502,61
VSIA L10 VM 20	85	260	3	80	502,61

## Subplates for NG10 solenoid valve without relief valve

Placa base NG10 para 1 electroválvula - sin limitadora  
Grundplatte für NG10 Magnetventile ohne Entlastungsventil  
Embase NG10 pour 1 électro. orifices verticaux sans limiteur de pression



Part n° Referencia	THREAD ROSCA	SIZE TAMANO	MAX. PRESSURE (bar) PRESION MAX. (bar)	OIL PORTS A-B TOMAS A-B	€
PBKV-10-12TV	1/2" BSP	NG-10	350	Verticales / Vertical	129,75

Other sizes on request / Otros tamaños bajo consulta / Konsultieren Sie uns für andere Größen / Autres dimensions sur demande

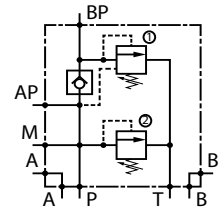
# SOLENOID VALVE

Electroválvulas  
Magnetventile  
Électrovalve



## NG10 High/low pressure blocks

Bloques de alta y baja NG10  
Block NG10 Hoch- und Niederdruck  
Blocs forés de control NG10

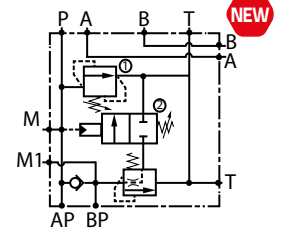


Part n° Referencia	Size Tamaño	Max. flow (l/min) Caudal máx. (l/min)	Max. Pressure. (bar) Presión máx. (bar)	Reg. rate (bar) Campo reg. (bar)	€
<b>VD CTP 05 NG-10</b>	NG-10	90	350	10-210	<b>844,21</b>



## NG10 High/low pressure blocks

Bloques de alta y baja NG10  
Block NG10 Hoch- und Niederdruck  
Blocs forés de control NG10



Part n° Referencia	THREAD ROSCA	P1=1	P2=2	MAX. FLOW (l/min) CAUDAL MAX. (l/min)	MINIMUM FLOW (l/min) CAUDAL MINIMO (l/min)	€
<b>VSMS-PDL10-P-3/4 20-10</b>	3/4" BSP	50-220	10-100	150	40	<b>652,50</b>
<b>VSMS-PDL10-P-3/4 35-20</b>	3/4" BSP	80-350	50-220	150	40	<b>652,50</b>